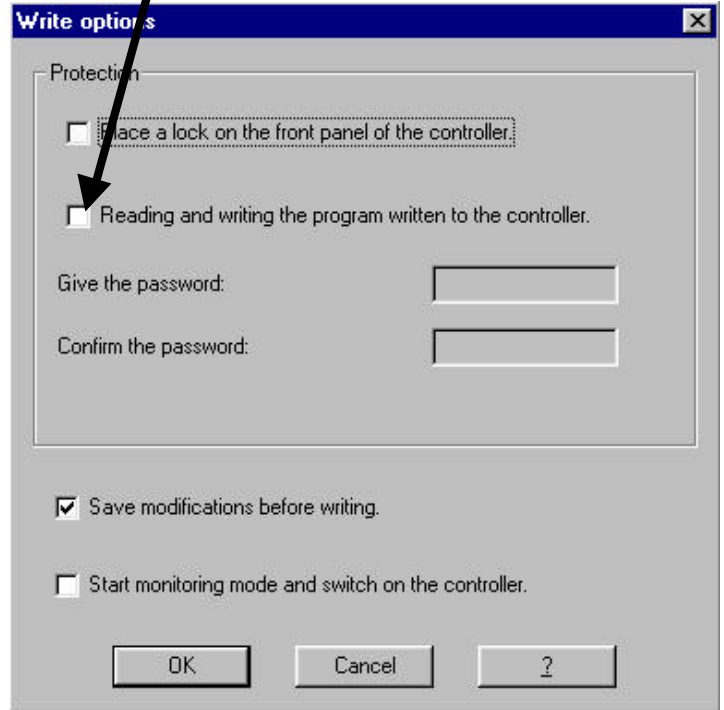


The password protects access to a program. When you write your program to the Millenium, the write option window opens; check the box indicated here

Once the password is active, you can no longer write to the controller nor read the program without knowing this password. The program is therefore protected. If you wish to access the menu and, for example, reset the time you will be invited to enter the password.



### 7.1 *You have lost your password*

If the password is accidentally lost, the only solution is to delete the program from the Millenium. To do this, go into the **controller** menu then select **delete the controller content**. It will then be possible to write a new program to the controller.

## 8 FRONT PANEL LOCK

The front panel lock function prevents any access to the menus. The lock is effective when the program is running, but also when it is stopped. To start or stop the program once the lock is active, you have to go via the software workshop. However, the front panel lock does not prevent use of the front panel buttons in a program.

When you write your program to the Millenium, the write option window opens. Then simply check the **“put a lock on the controller front panel”** box.

### 8.1 *Unlocking the front panel*

To unlock the front panel, rewrite the program to the Millenium without selecting the **“put a lock on the controller front panel”** option.

## 9 PASSWORD AND FRONT PANEL LOCK:

Both functions together protect access to the application program and the front panel lock prevents access to the Millenium.